

## FANUC CNC Education Simulator

Affordable and portable training solution on 'real' FANUC hardware

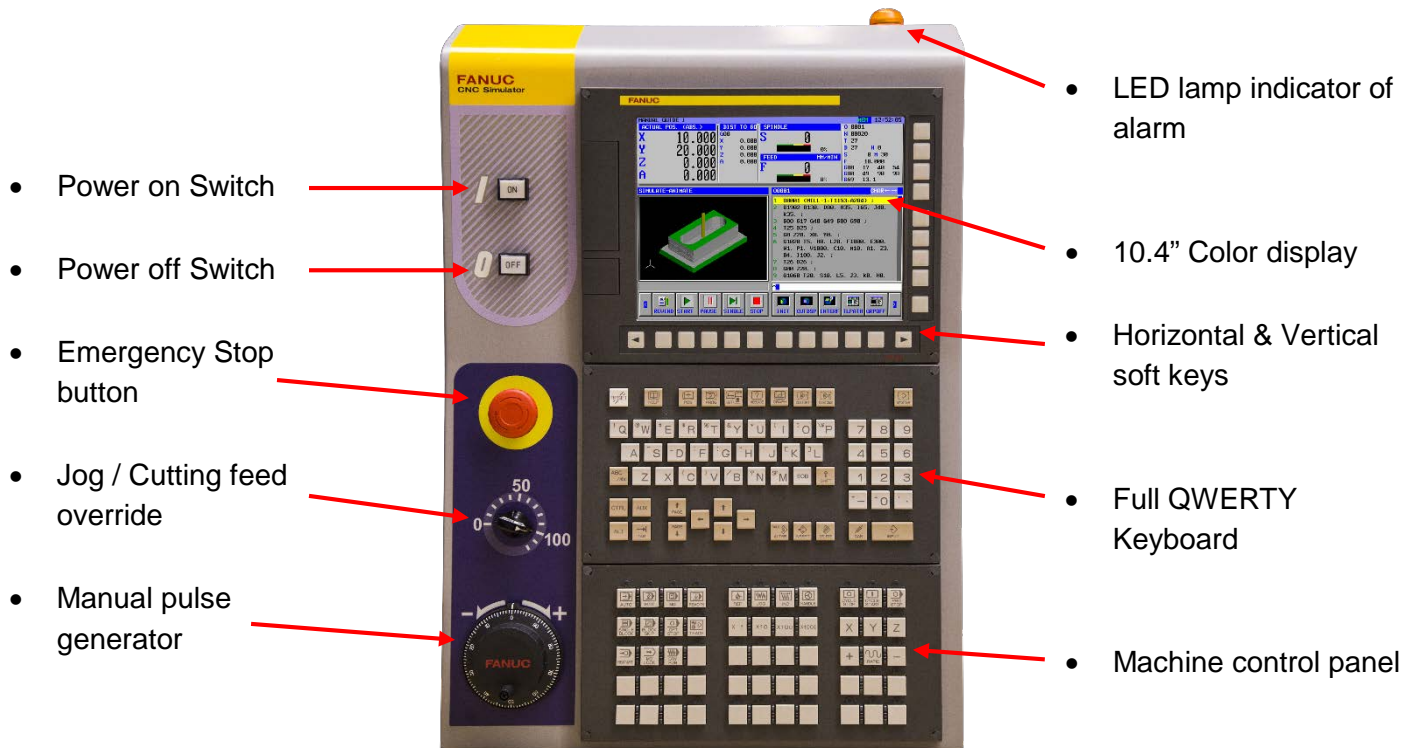
### Features

- Switchable mill and lathe system in one simulator
- 3 axis milling / 2 axis turning system + 1 spindle
- Manual Guide i installed for conversational program creation and 3D simulation
- Inch / metric switchable
- 512kb part program storage, with 400 registered programs
- 32 Tool offset pairs
- Work piece coordinates G52 – G59 + 48 additional on mill
- 10.4" Color LCD
- Full QWERTY keyboard
- USB, Flash ATA and Ethernet connectivity
- Optional I/O link I and RS232 serial interface
- Power: AC 100 - 240, 0.8A – 0.4A, 50 – 60Hz
- Power consumption 80w
- Weight: Approx. 26.4lb (12KG)
- Dimensions: Approx. 16.5" x 7.5" x 23.3" (421mm x 190mm x 592mm)



The FANUC CNC simulator is a perfect addition to the classroom and an essential component to gain maximum exposure to FANUC CNC controls when actual machine time is limited. Based on the FANUC OiF platform, the simulator will allow you at power on to switch between milling and turning configurations to teach programming, navigation and operation on the world's most popular CNC control. Simple configurations make it easy to learn how to operate and edit data on a modern FANUC control. FANUC's MG*i* conversational interface allows user to graphically generate programs that can be simulated in 3D, prior to being converted back to conventional NC programs to be used on machine tools using FANUC controls. Uploading and downloading (read and punch) functions are facilitated by means of the standard Flash ATA interface and USB interface, and DNC functions are supported by Ethernet and Flash ATA card.

## Front Appearance



### Designed with the classroom in mind

Students can perform operations and programming exercises away from the machine and then simply take the program to the machine. Features such as FANUC's dual screen display are standard features, so with additional PC software instructors can replicate the screen of the simulator on a PC, via the Ethernet connection for instructor led classes on a projector.

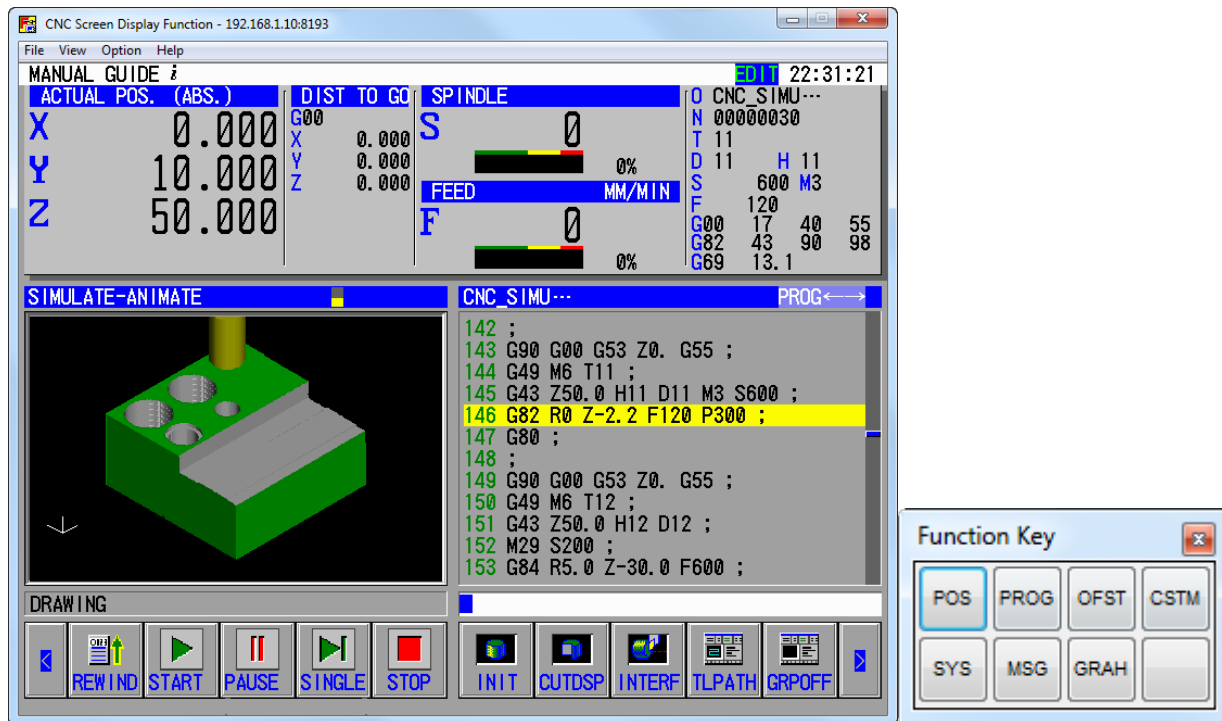
### Process-orientated conversational programming

For students advancing to a smaller job shop or tool room, user friendly MANUAL GUIDE *i* conversational programming simplifies and enhances their productivity. This innovative part programming operation environment focuses the student on machine operations, rather than just G-code, allowing a job to be completed in the shortest time possible.

### FANUC CNC Simulator Part number

AEX-6263-0300

## CNC Screen Display Function



The CNC Screen Display Function software enables the user to operate and display the screens and data from the simulator on their PC screen in real time via the Ethernet connection. The function key buttons allow you to switch between functions, while the main screen will show all the necessary data. Data can be edited, loaded and saved, enabling tutor led classes to be taught to a larger group on a large screen display, while the students follow on their own simulators.

CNC Screen display software installed on a PC can connect to multiple simulators within a network, adding to the interactive experience.

### CNC Screen display software

#### Part number

A02B-0207-K776

Local Representative:

Richard Brooks

Technical Education Products, Inc.

(800) 487-6825

dbrooks@techedproducts.com

www.techedproducts.com

