

GM S.E.T. Troubleshooting Trainer (model 18002TT)



Covers General Motors S.E.T. “Electrical/Electronics Stage 1, 2 and 3”:

Locking Suitcase

- Provided in locking suitcase for security and portability
- Includes components for all three stages and original GM “faulted” components
- Local and Network fault insertion
- Fault insertion selection by circuit number, “Experiment 3-2”
- Fault insertion selection by module
- Instructor can develop circuits and faults at component level
- Network display and storage of student’s performance
- Compatible with ATech’s Network System and IMP

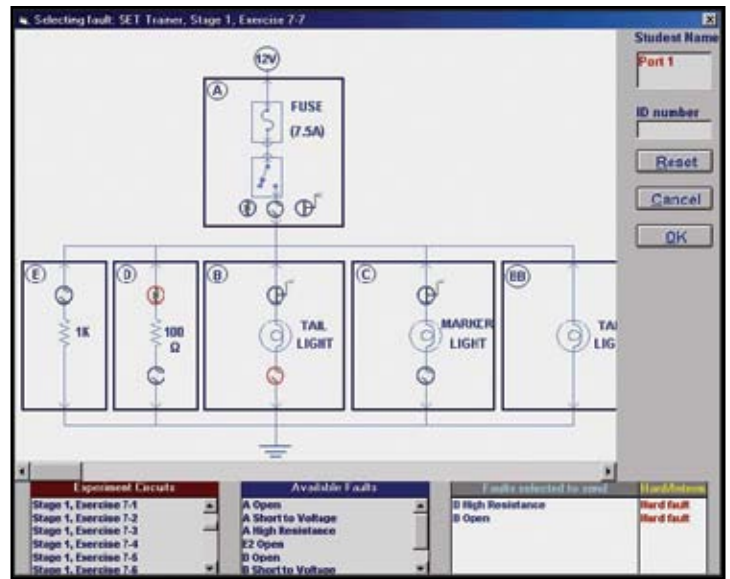


Call Now to Place your Order (Press 2 for Sales)

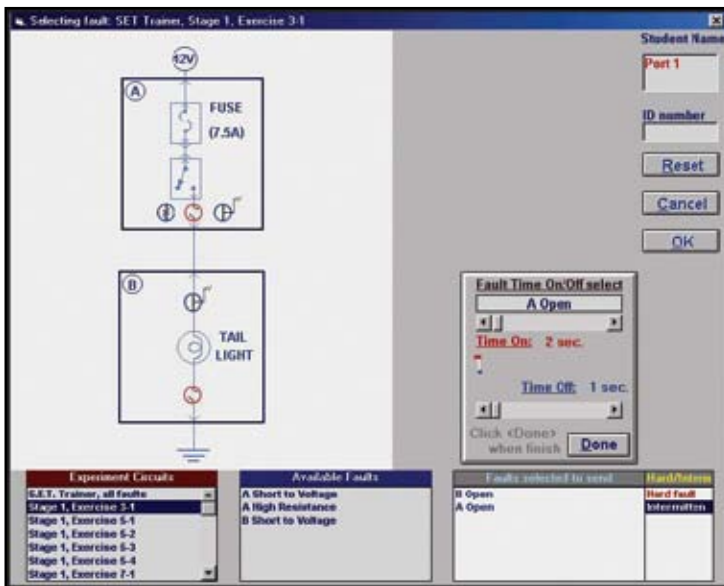
ATech Training, Inc.
12290 Chandler Drive • Walton, KY 41094
Toll Free: 1-888-738-9924
Phone: 859-485-7229 • Fax: 859-485-7299
E-mail: sales@atechtraining.com
www.atechtraining.com

ATech
Automotive Technology

- Quick setup for “On the Road” Training
- Fault insertion in individual or all student stations from instructor’s computer
- Up to 5 faults can be preselected for insertion
- Preselected faults will automatically be inserted in order of selection (when student completes one, next one is given)
- Instructor’s computer displays student’s answer, correct answer and stores results in student file



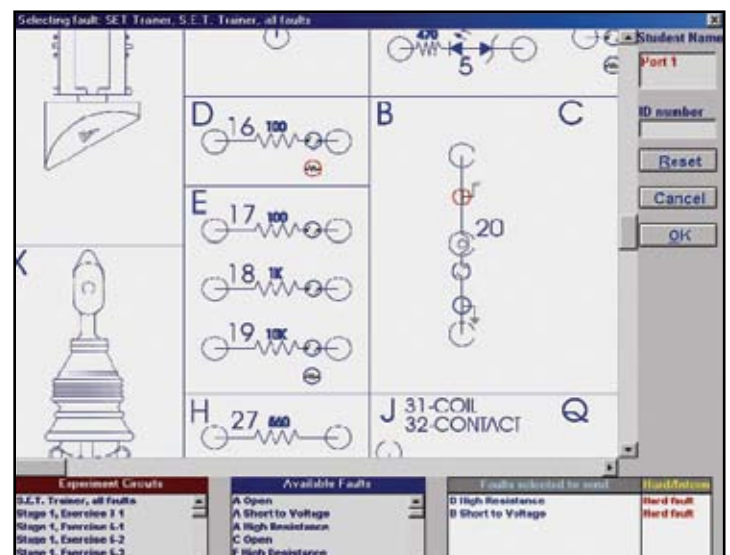
Fault Selection by S.E.T. Exercise Number



Intermittent Fault Time Adjustment

- ATech’s copyrighted “Schematic Based Fault Insertion”
- Fault selection by S.E.T. Exercise Number
- Fault Selection from list or schematic indicator
- On screen indication of selected faults

- Intermittent fault “On” and “Off” time adjustments
- “Build Your Own Circuit” capability - Instructor can select from all faults
- Troubleshooting practice or Exam Mode capability
- Student results are saved in selection location



“Build Your Own Circuit” Fault Selection