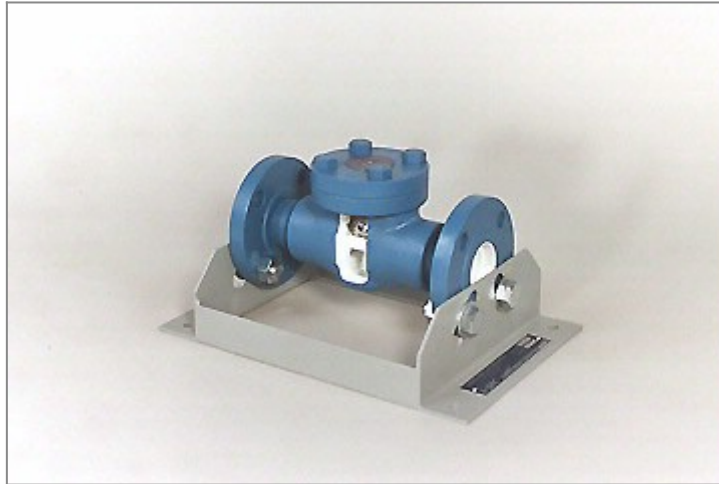


# Ball Check Valve Cutaway, 1" - 2"



Model: 268

DAC Worldwide's Ball Check Valve Cutaway, 1" - 2" (268) allows for convenient classroom training in the operation, construction, and maintenance of an industrial ball check valve. Through carefully planned sectioning and color-coding, the complete internal configuration of the valve is exposed and showcased. Seal features and hardware locations have been retained, allowing for "hands-on" training in maintenance.

## **FEATURES & SPECIFICATIONS**

- Sectioning of actual hardware (common valve makes and models chosen).
- Cleaning, priming, and painting using a high-durability, urethane coating.
- Color-coding of valve body, internal surfaces, seat, and closure devices, using contrast colors.
- Replacement, plated hardware, where required.
- All seals, and seats shown.
- Welded, formed-steel, mounting stand with provision for tabletop mounting.
- Provision for mounting on related bench, workstation and storage rack products.

## **PRODUCT DIMENSIONS**

- Weight: Varies, 35-45 lbs. (16-20 kg) each

## **OPTIONS** Recommended #902V Mobile Display Stand

### **Address**

DAC Worldwide  
3 Killdeer Court, Suite #301  
Swedesboro, NJ 08085

### **Contacts**

email: [contact@dacworldwide.com](mailto:contact@dacworldwide.com)  
phone: (800) 662 5877