

# TRAINING UNITS

## TU-810 EEV TABLE-TOP AIR CONDITIONING AND REFRIGERATION TRAINER

*This training unit demonstrates a basic refrigeration and air conditioning system featuring an electronic expansion valve.*

### Specifications

Electrical Requirements: 120VAC; 60Hz; 15A

Uses R134a Refrigerant

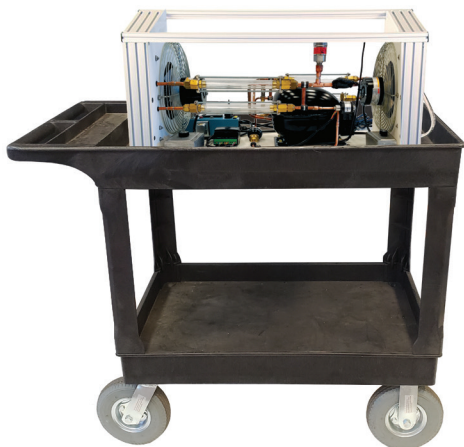
Overall Size: 34" L x 16" W x 16" H

Weight: 80 lbs.

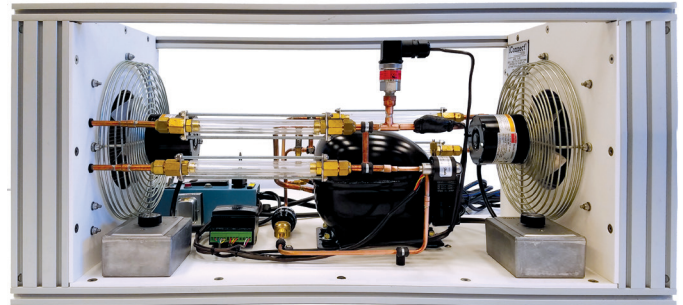
1/3 HP hermetically sealed reciprocating compressor.

### Features

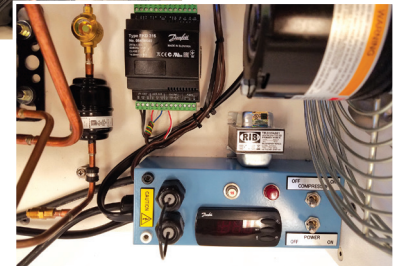
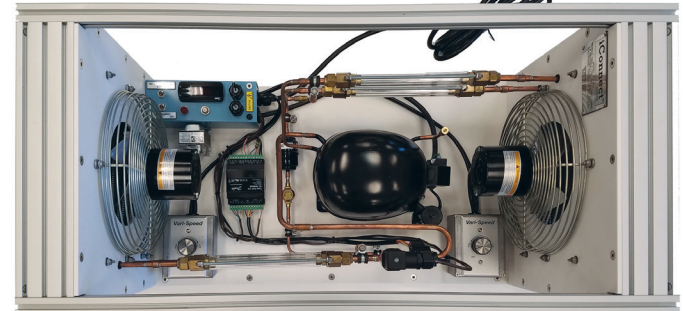
- Electronic Expansion Valve (EEV) to control the flow of refrigerant with a sophisticated design. This cutting-edge technology can also operate as a fixed orifice metering device.
- Demonstrate, operate and program an EEV electronic controller.
- Easy access for electrical measurements.
- Lightweight for easy on-the-go training; weighing only 80 lbs., this unit can be easily moved, transported and stored.
- Variable fan speed controls for evaporator and condenser load adjustment
- Sight glasses at inlet and outlet of evaporator and condenser constructed of explosion-proof, tie-bolt design
- Conditions of refrigerant and oil can be observed under fluid and gas stages of operation
- Evaporator and condenser copper tube coils with aluminum fins
- Drip pan located under the evaporator for condensation drain
- Includes Operation Manual



*\*Convenient push cart available separately*



*Top view*



**E-LEARNING CURRICULUM NOW AVAILABLE**

**TU-810: Suggested 2 courses totaling 36 credit hours**

*Subscription includes Instructor's selection of any 5 courses in catalog. Add more courses by request.*

1. 141 Refrigeration I
2. 142 Refrigeration II

**INCLUDES:** The popular iManifold 900C service kit, and a new iManifold Pulse kit for permanent installation and 24/7 monitoring on a package unit. See page 34 for more details.

**Shipping Weight: 230 lbs.**

**Shipping Dimensions: 36" L x 44" W x 25" H**

**iConnect**<sup>®</sup>  
TRAINING