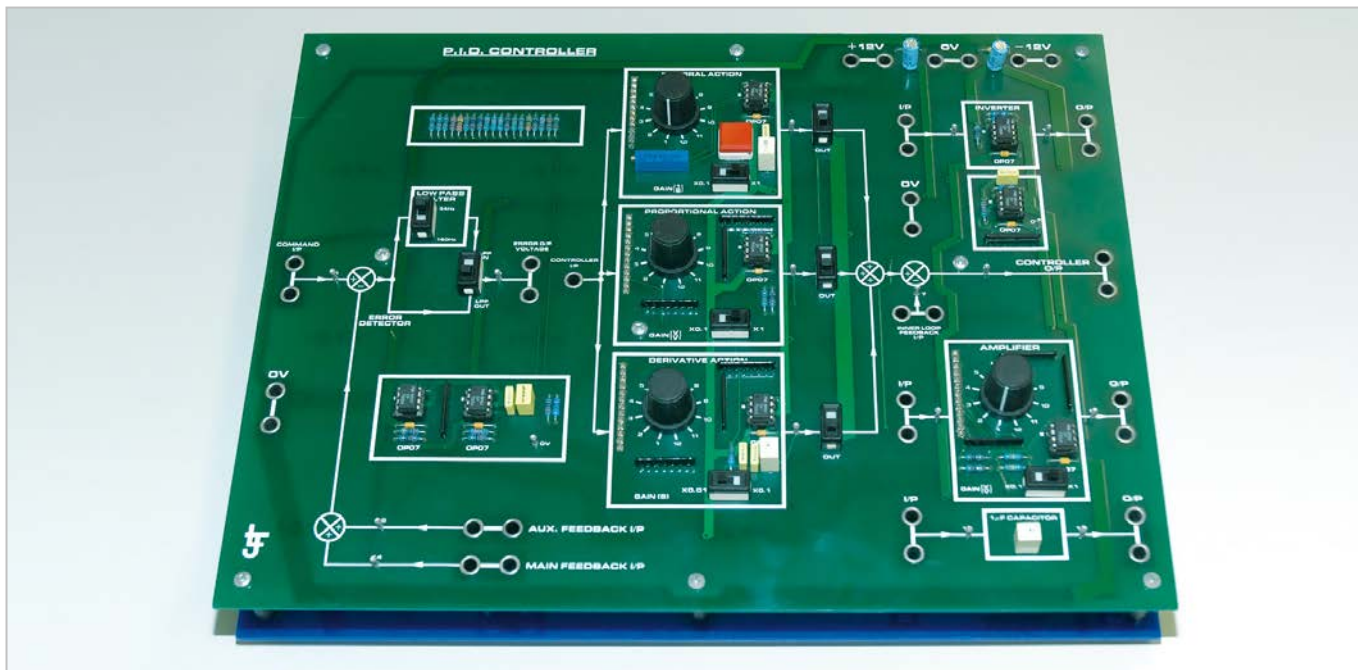


## Product Information Sheet

### PID Controller Module



The 207-04 PID Controller module is an analog control system that allows the investigation of three-term control actions which can be configured in conventional servo or process modes.

The module is designed to be used in conjunction with our Analog and Digital Motor Control teaching equipment, to provide a PID control device for the 207-15 D.C. motor control module.

#### System Features Include:

- Command Input Connections
- Two Primary Feedback Connections
- Error Detector
- Error Output Connections
- Switchable Low Pass Active Filter
- Input Connection to PID Elements
- Integral Control Element
- Proportional Control Element
- Derivative Control Element
- Control Selection Switches
- Summing Junction for PID Outputs
- Inner Loop Error Detector
- Controller Output Connections
- Auxiliary Signal Inverter
- Auxiliary Non-Inverting Amplifier
- Capacitor for High Pass Filter
- Power Supply Connections

#### Items Included:

- Controller Module
- Technical User Manual

#### Other Items Required:

- 207-01 Curriculum Manual Set
- 207-03 Command Potentiometer
- 207-15 Motor Control Module
- 207-05 4mm Connection Leads
- 207-40 Power Supply
- Multimeter
- Dual Trace Oscilloscope
- Function Generator

#### General Information:

Weight: Approx 0.65 kg  
Dimensions: 305 x 50 x 230 mm (W, H, D)  
Voltage:  $\pm 12V$  DC  
Packed Volume: 0.0073 m<sup>3</sup>  
Packed Weight: 1 kg

**Order Code: 207-04**

P88638-A

For more information visit [www.ljcreate.com](http://www.ljcreate.com)